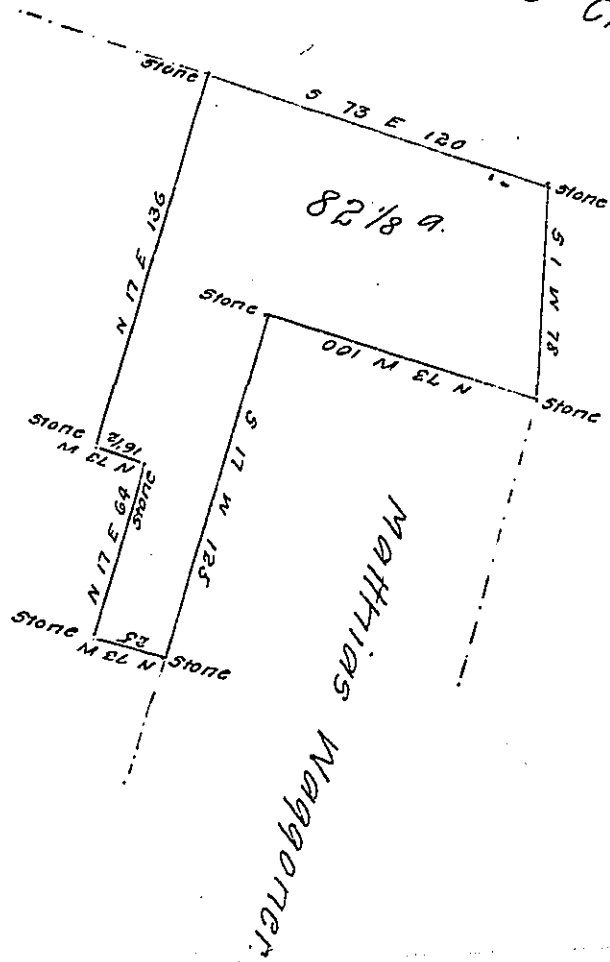


Widow Grubb's Claim

C-112-291  
Alexr. Mc. Alroy



By virtue of an Application dated the first of May 1769  
 No. 3989 Surveyed the 16 February 1786 to Matthias Waggoner  
 the above described tract of land situate in Mount Bethel  
 township Northampton County containing Eighty two acres  
~~one hundred and thirty five~~ <sup>twenty eight</sup> perches & the allowance of  
 six P Cent &c<sup>a</sup>.

P-Geo: Palmer —

To John Lukens Esq<sup>r</sup> S.G.

IN TESTIMONY that the above is a copy of the original remaining on file in  
 the Department of Internal Affairs of Pennsylvania, made  
 conformably to an Act of Assembly approved the 16th day of  
 February 1833, I have hereunto set my hand and caused  
 the Seal of said Department to be affixed at Harrisburg,  
 this twenty-first day of May 1907.

*Henry Hoover*

Secretary of Internal Affairs.